

**Report to the Cabinet Committee on  
Climate Change and the Environment  
8 December 2010 - Item 9**

**Appendix 'A'**



**Bare peat on Langden Head, illustrating extent and nature of erosion.**



**Eroding moorland grip, showing how peat is lost and habitat degraded.**



**Geo-textile being installed at Langden Head on steeper slopes of bare peat to promote re-vegetation.**



**Heather brush being lifted on to project site at Langden Head**



**Re-vegetation of bare peat with "nurse-crop" at Langden Head.**





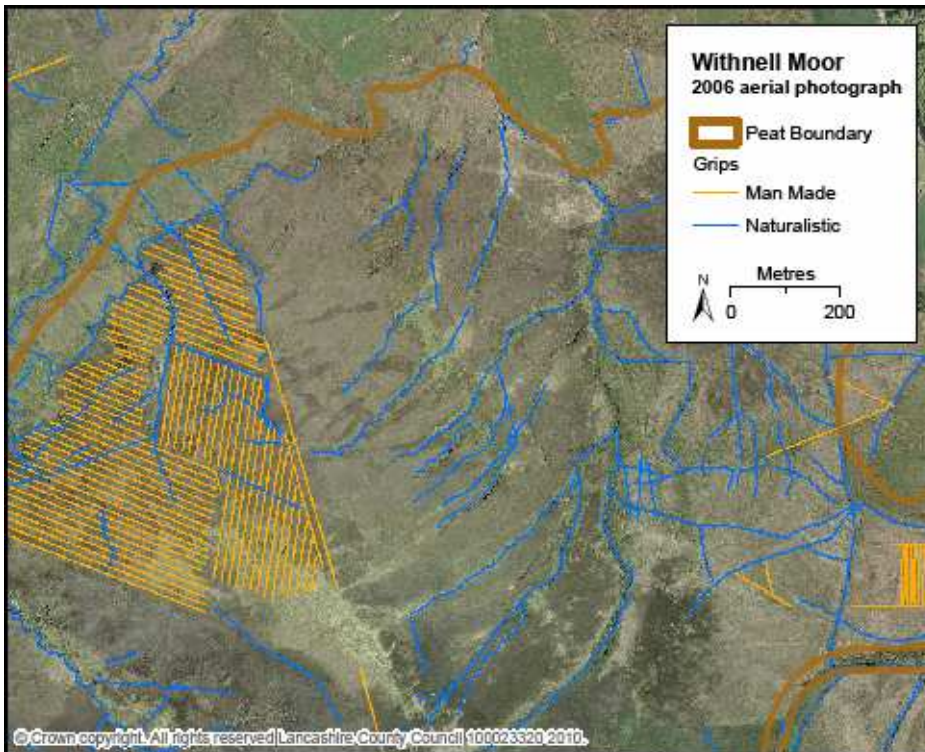
**Clearance of scrub woodland at Heysham Moss.**



**Installation of polygene sheeting at Heysham Moss.**



**Bog pools forming behind installed bunds at Heysham Moss.**



**Mapping of moorland grips and watercourses being developed by Lancashire Peat Partnership.**